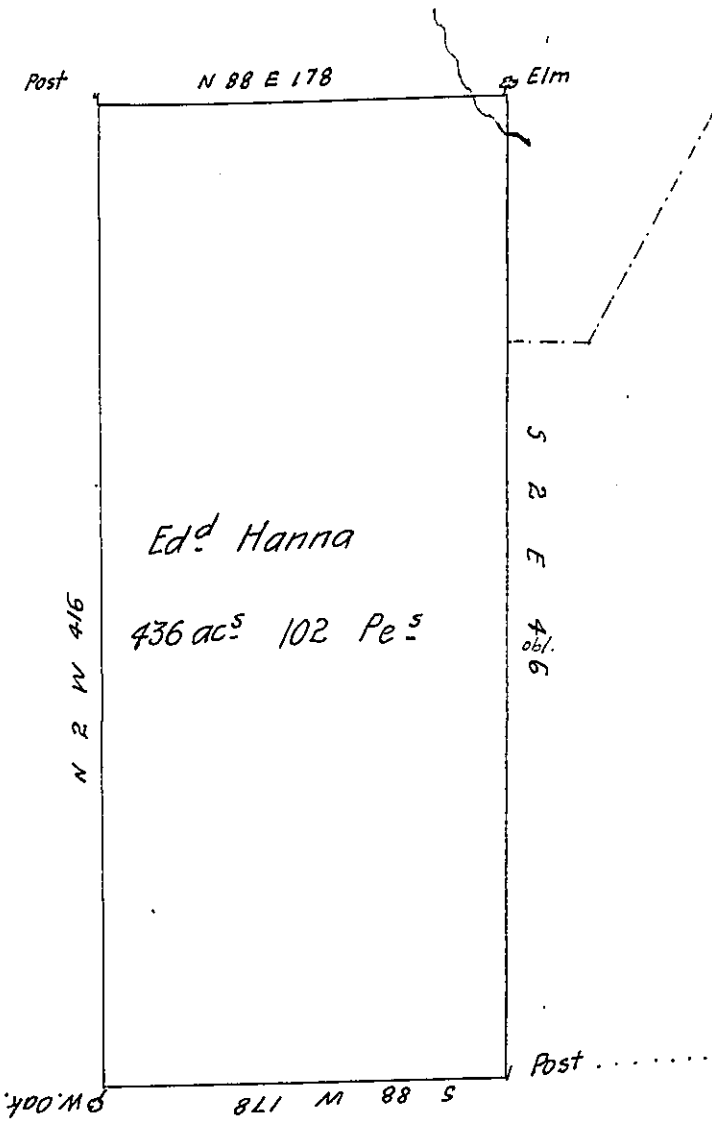


John Reher

C-38-261

Alexander Rogers



John Breader

C-12 - 2413

Scale 100
Perches to
an Inch.

John McGee & Wm Campbell

Situate in Slipperyrock Township mercer County Con-
taining 436 ac^s 102 perches and the usual allowance of Six per
Cent, Surveyed Nov^r 9th 1836 for Edward Hanna In pursuant of
an actual Settlement made in 1798 Jan^y 7th 1837

B. Alexander D.S.

John Taylor Esq^r

S. G.

IN TESTIMONY that the above is a copy of the original remaining on file in
the Department of Internal Affairs of Pennsylvania, made
conformably to an Act of Assembly approved the 16th day of
February, 1833, I have hereunto set my Hand and caused
the Seal of said Department to be affixed at Harrisburg,
this nineteenth day of April 1905

[Signature]
Secretary of Internal Affairs.